



Treetops is the most charming three-bedroom flat occupying the entire top floor of a large detached villa in the principal Borders town of Galashiels. Accessed from Paterson Street, there is private parking, plus integral garage over the courtyard to the side.

Only a short distance from the new Borders Railway that runs from Tweedbank to Edinburgh, there is also excellent access to Edinburgh and other Border towns via the A7 road link.

Internally, the property comprises three bedrooms, a bathroom, a sitting room, a dining room, a breakfasting kitchen, a study area and an integral garage. Deceptively spacious, with attractive period features, the property is double glazed and benefits from gas fired central heating.

Externally, there is a generous courtyard immediately outside the property which has been laid with artificial grass, and offers an excellent external space to enjoy the sunshine. Alternatively, it offers a private parking space to the front of the integral garage.

With all amenities close at hand including the aforementioned railway station, the property is situated in a very accessible location.

Edinburgh 36 miles. Tweedbank 1.5 miles. Melrose 3.5 miles Peebles 21 miles

(All distances are approximate)

Location:

Treetops sits in a popular residential area of the principal Borders town of Galashiels. With a population of 12,000, the town offers a full range of shopping facilities, including Tesco, ASDA, Boots, Next, WH Smith and Marks & Spencer. Local tourist attractions include Old Gala House and Abbotsford House, the former home of Sir Walter Scott, with its award winning visitor centre as well as many other attractions in nearby Melrose and other Border towns. Among the independent shops there is also a cinema, a health centre, a swimming pool, gym, dentists, orthodontist and a new Transport Interchange built primarily around the new train station in conjunction with the Borders Railway which is a particular bonus. Local sports teams include Gala RFC, Gala Fairydean FC, and Gala CC and local festivals include the historic Common Ridings held in the summer which is of particular note.

There are also a variety of outdoor pursuits in the area that include fishing on the River Tweed, fieldsports, horse riding, golf, lawn bowling, mountain biking, and a selection of walks including the Southern Upland Way.

Galashiels has six primary schools, and nearby Melrose is home to St Marys Preparatory School with secondary schooling at Galashiels Academy. The Borders College and Heriot Watt University also have a campus in the town, and there are also a number of churches in the area. The Borders General Hospital, the largest hospital in the Scottish Borders is only four or so miles away, on the fringes of Melrose.

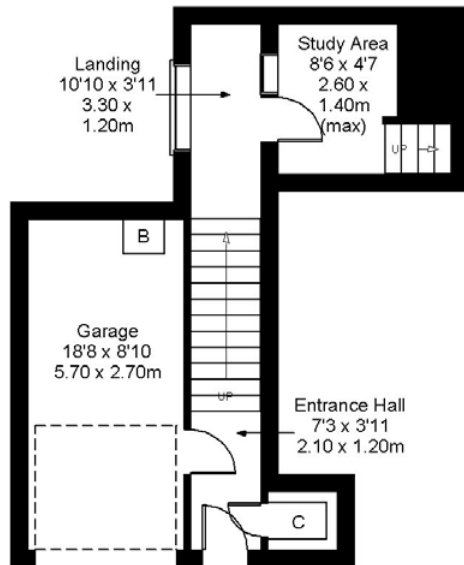
Galashiels sits in an easily accessible area and can be reached by the A7 which runs through the town and provides the links to Edinburgh or the north of England. The area is also served by the Borders Railway which recently opened and runs from Tweedbank to Edinburgh, with the aforementioned station in the town. There is also a busy bus service which runs from the Interchange, beside the railway with links to Newcastle and Carlisle in the South, as well as Edinburgh and the other Border towns.

Edinburgh and Newcastle airports - both international, offer an excellent choice of destinations and are 39.5 miles and 68 miles away respectively.

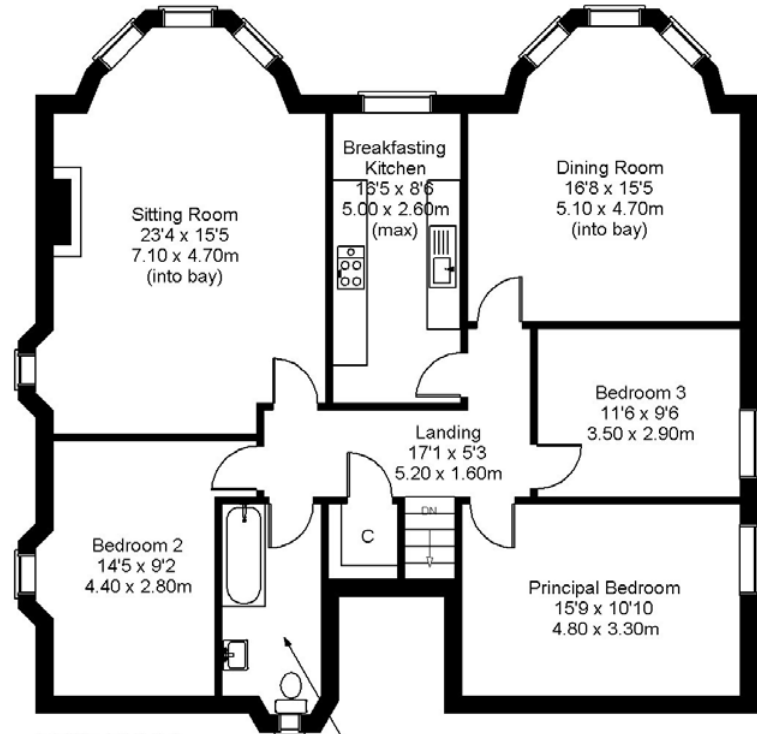


Treetops, Paterson Street, Galashiels, TD1 3DD

Approximate Gross Internal Area
1,711 sq ft - 159 sq m



GROUND FLOOR



FIRST FLOOR

FOR ILLUSTRATIVE PURPOSES ONLY

Produced by Potterplans Ltd. 2016



DIRECTIONS:

For those with satellite navigation the postcode for the property is: TD1 3DD

From the A68, take the A6091 signposted Melrose and Galashiels. Continue on this road, passing Melrose on your right. Proceed over the three roundabouts, and the River Tweed, into Galashiels, and proceed forward over the small roundabout. Take the 2nd left turn onto Paterson Street and the entrance to Treetops is fifty yards up on the right hand side

From the A7 (going South) travel through Galashiels, signposted Hawick, follow the road out of Galashiels, which is the Abbotsford Road, and turn right onto Paterson Street, which is before the small roundabout and follow the above directions.

FURTHER INFORMATION:

Fixtures and Fittings:

Only items specifically mentioned in the particulars of sale are included in the sale.

Services:

Mains electricity, mains water, mains drainage, gas central heating, telephone and broadband

Outgoings:

Scottish Borders Council Tax Band Category: E

EPC Rating:

Current EPC: D61

Viewings:

Strictly by appointment with the selling agents.

Offers in Scottish legal form must be submitted by your solicitor to the selling agents. Interested parties are also advised to instruct their solicitor to note interest with the selling agents. In the event of a closing date being set the seller(s) shall not be bound to accept the highest offer or any offer and the seller reserves the right to accept any offer at any time. No responsibility can be accepted for expenses incurred in inspecting or visiting properties which have been sold or withdrawn.



Whilst these particulars have been carefully prepared and are believed to be correct, their accuracy cannot be guaranteed. They must not be relied upon as statements or representations of fact and shall not form part of any offer or contract thereon.

The text, photographs, plans or diagrams, within these particulars are for guidance only, and all areas, room measurements and distances are approximate.

Macpherson Property has not tested any services, equipment or facilities, and all intending purchasers must satisfy themselves, by inspection or otherwise, that the information given is correct, as no warrant is given or implied.



Macpherson Property, 3 St. Dunstons Lane,
Melrose, Scottish Borders TD6 9RS
Tel: 01896 820 226

Email: enquiries@macphersonproperty.co.uk Web: www.macphersonproperty.co.uk